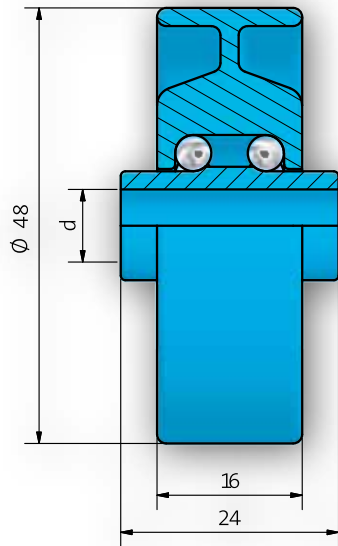
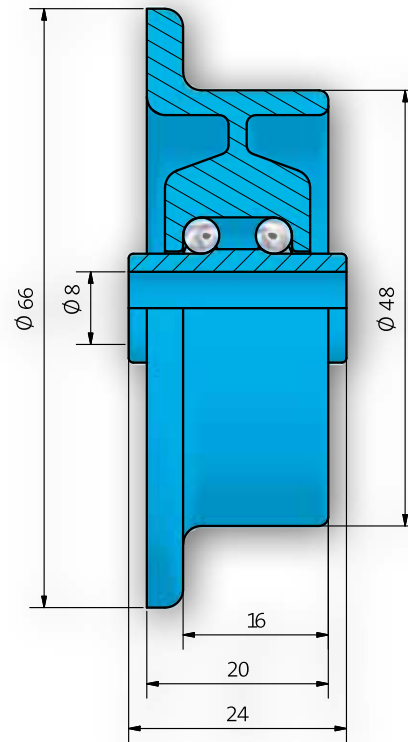


## Type 610 / 611

Type 610 Plastic

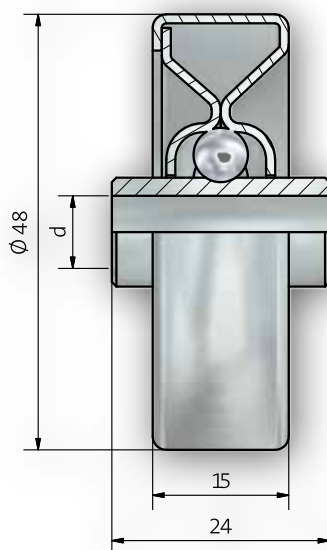


Type 611 Plastic



## Type 612

Type 612 Steel galvanized



## Type 610 / 611 / 612

Plastic Wheels Type 610 and 611 (guide flange) have a load capacity of 100 N.

Steel Wheels Type 612 with or without guide flange have a load capacity 200 N.

Available for shaft diameter 6 mm or 8 mm.

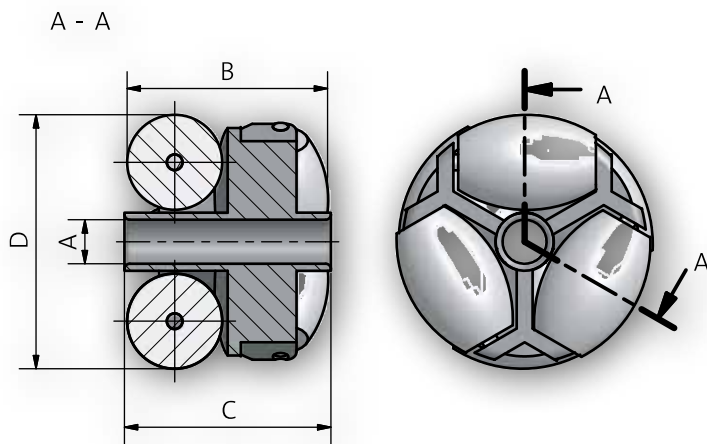
Wheels of the Types 610/611/612 are used in all areas of conveyor- and storage-technology for

- Flow-Trough Tracks
- Guide tracks, side deflector and load tracks in conveying systems
- Roller tracks for the combination of two workstations
- Packing machines
- Guide for driving belts

### Order Example

610-A6  
Type .....  
shaft hole diameter .....

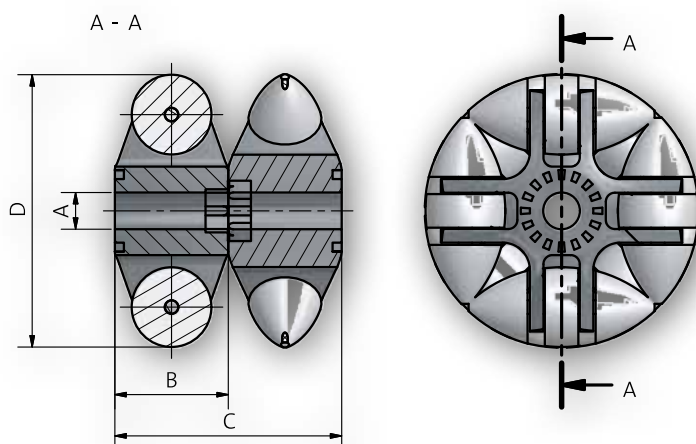
## Type 620



Plastic, one piece

D	40	48	60	80
A	8	8	8	8
B	26	37	47	60
C	29	39	48	64

## Type 625



Plastic, two pieces

D	50	60	80
A	8	8	8
B	19,5	25	30
C	39	51	60

## Type 620 / 625

Universal roller are used where packing drums, load carrier, packages, cartons or work pieces have to be turned, assorted, diverted, supplied or commissioned.

The size and the weight of the load regulate the pitch. Table surfaces of any sizes can be equipped with Universal Roller.

The following individual load capacities per roller should not be exceeded:

- Ø 50 mm: 100 N
- Ø 60 mm: 200 N
- Ø 80 mm: 400 N

The universal roller can be used at a temperature range between -12° C and +80°C.

The universal rollers always have to be installed in main transport direction, as the resistance of the other direction is slightly higher.

If equal resistances should be received in all directions, wheels have to be mounted staggered at 90°.

### Order Example

620-D=48

Type .....  
External diameter .....